



# GAT MONTHLY MEMBERSHIP PROGRESS REPORT

Results as of: 2/28/2023

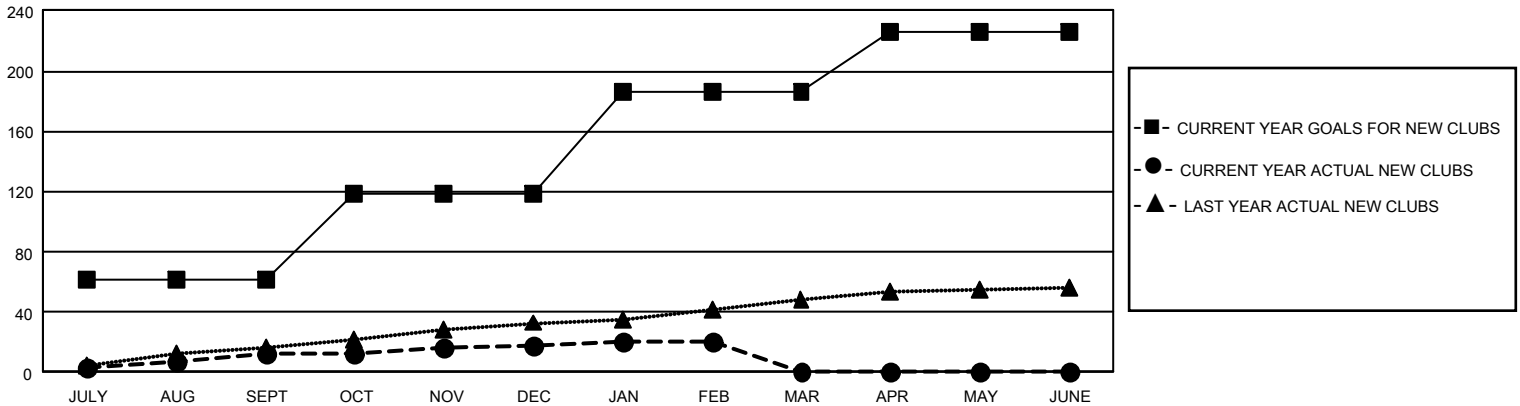
## GAT Constitutional Area 5 - Korea

REPORT DOES NOT INCLUDE CLUBS IN UNDISTRICTED AREAS.

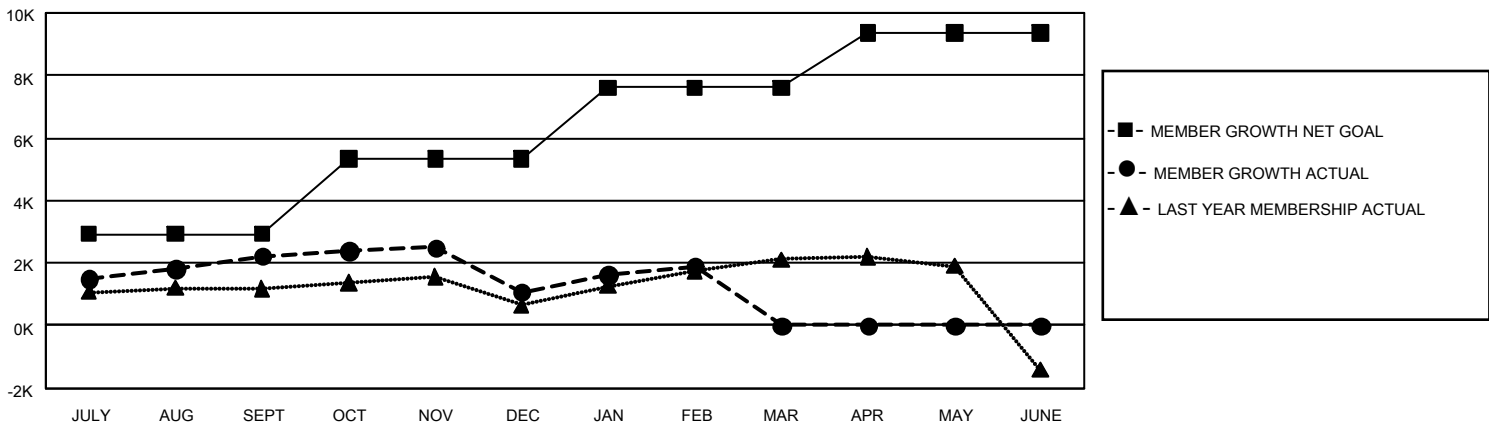
Clubs			
RESULTS FOR 2022-2023			
QUARTER	NEW CLUB GOAL	NEW CLUBS	DROPPED CLUBS
JULY/AUG/SEPT	183	12	12
OCT/NOV/DEC	174	6	16
JAN/FEB/MAR	201	2	7
APR/MAY/JUNE	120	0	0

Members			
RESULTS FOR 2022-2023			
QUARTER	MEMBER GROWTH NET GOAL	MEMBER GROWTH ACTUAL	DROPPED MEMBERS ACTUAL (including transfers)
JULY/AUG/SEPT	2925	4,708	2,305
OCT/NOV/DEC	2400	2,024	3,117
JAN/FEB/MAR	2293	1,764	874
APR/MAY/JUNE	1738	0	0

GOALS AND ACTUAL NEW CLUBS CUMULATIVE



GOALS AND ACTUAL MEMBERS CUMULATIVE



DROPPED CLUBS: 35	
<b>DROPPED MEMBERS</b>	
DECEASED	192
CLUB CANCELLED	361
OTHER	5,743
<b>TOTAL</b>	<b>6,296</b>

1,482 CLUBS OF 2,057 ADDED 1 OR MORE NEW MEMBERS

[CLICK HERE FOR CUMULATIVE MEMBERSHIP DATA](#)

GENDER DISTRIBUTION	
MALE	55,055 (74.37%)
FEMALE	18,970 (25.63%)
NON BINARY	0 (0.00%)
PREFER NOT TO ANSWER	0 (0.00%)
TOTAL FAMILY UNIT MEMBERS	4,712
FAMILY MEMBERS PAYING HALF DUES	2,725